



GMS-1500-LB

Digital Controller of Gas Detector | 4-Channel

| Features

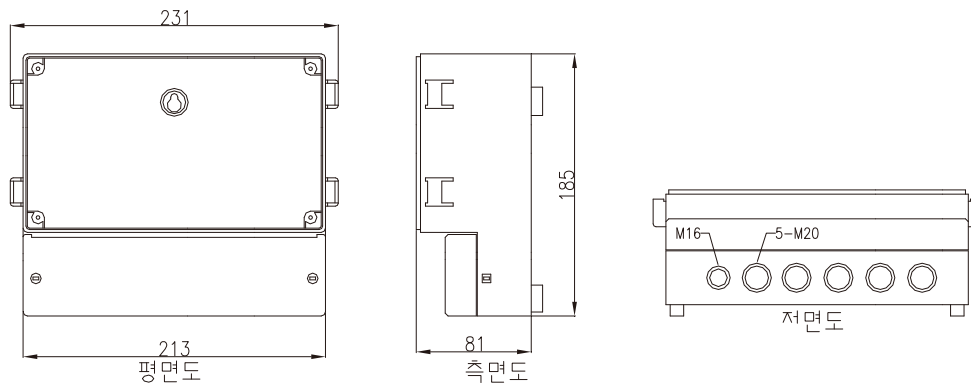
GMS-1500-LB makes it easy to be aware of gas leakage by large light bar.

Not only that, it makes 95dB buzz sound to help users to notice any dangerous situation from gas leakage.

GMS-1500 is multi-point type gas detector signal receiving unit which can be connected to four (4) detectors. Receiving analogue continuous signal from four (4) detectors and converting it into digital signal, GMS-1500 provides various alarming and monitoring environment by micro-processor.

Also, GMS-1500 converts digital signal into the 4-20mA standard current signal for output signal which can be transmitted to various external devices such as PLC, DDC, RECORDER, and so on. Using these functions, you can easily construct the gas monitoring system more extensive as well as more comprehensive.

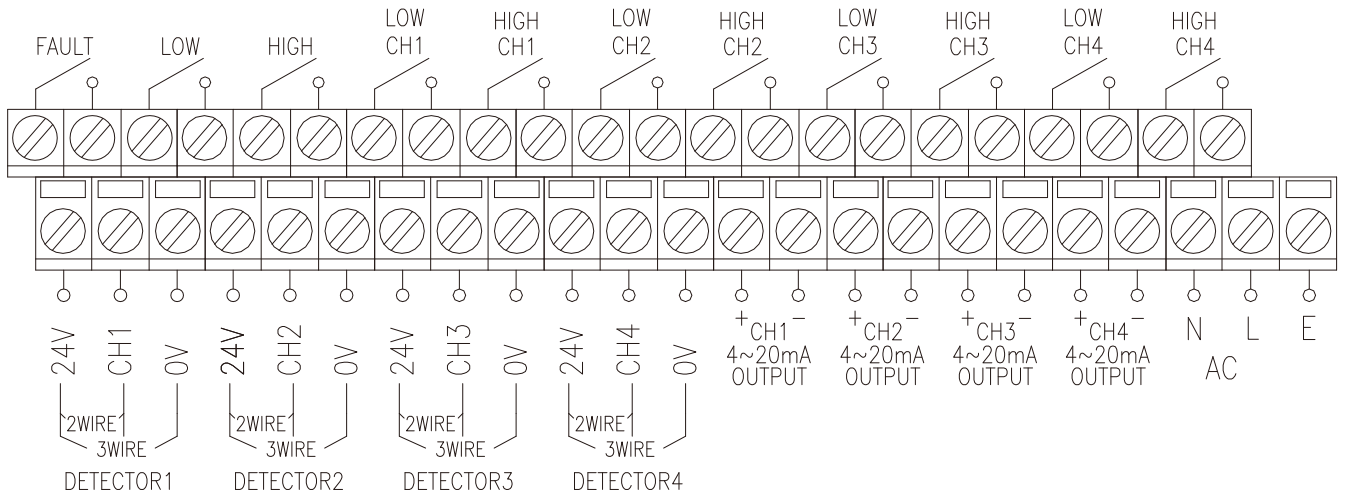
| Dimension



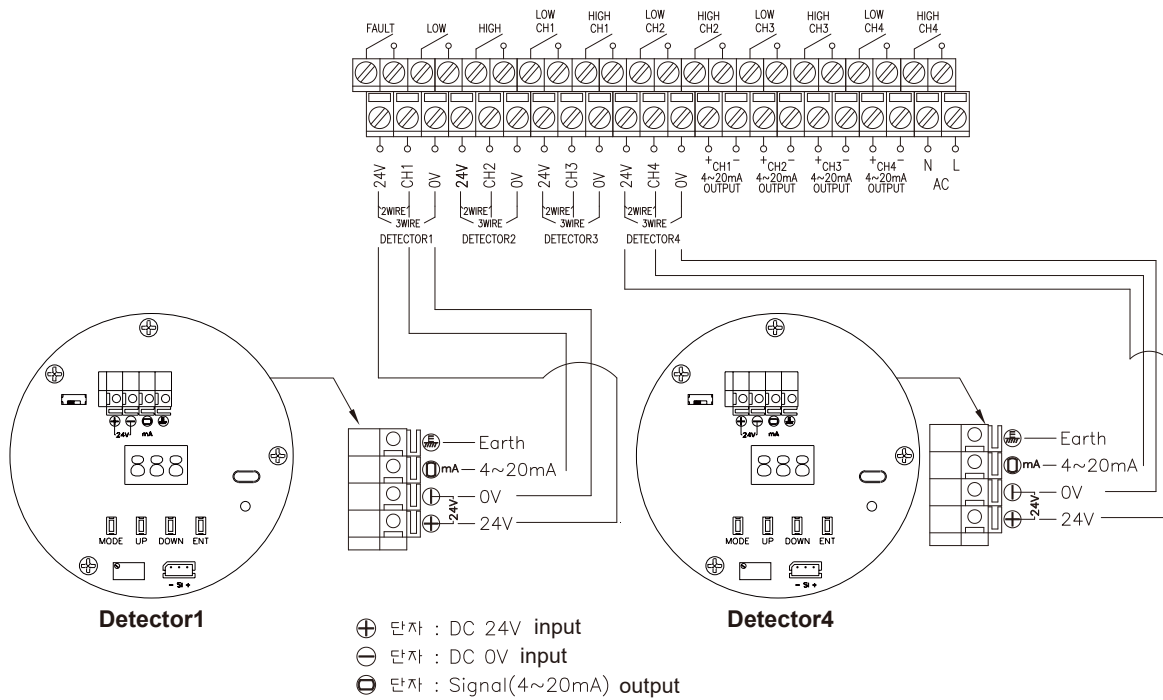
| Product Specification

Segment	GMS-1500-LB
Mounting	Wall Monuting
Connecting to Detector	Multi-point Type (Max connectable detectors -4nuits) / 4circuits
Input Power	AC 230V/60Hz
Input Signal	4~20mA DC/F.S
Output Power	DC 24V (250mA)
Output Signal	4~20mA DC/F.S
Density Indication	F.N.D Display – PPM, %LEL, % (set by user)
Alarm Indication	Low Alarm – ‘LOW’ LED (red)
	High Alarm – ‘HIGH’ LED (red)
	Trouble Alarm – ‘FAULT’ LED (yellow), 2mA
Alarm Method	Optical – LED Blinking
	Sonic – Buzzer sound (higher than 80 dB)
Set Alarm Value	HIGH/LOW 2 step Alarm (set by user)
Alarm Delay Time	0~99 sec (set by user)
Alarm Release	Manual or Automatic release
Alarm Output	2 Step (HIGH/LOW) Alarm relay contact
Operation Temperature	-10~50°C
Operation Humidity	5~95% RH (Non-condensing)

| Terminal



| Wiring (detector ↔ receiver)



| Authorized Distributor